

Zach Elementary School

School Motto: Together We Inspire

School Mission: We commit to do our best to encourage, inspire and meet each child's needs.

School Vision: Ensure high levels of learning for all students.

Facebook: facebook.com/zachelementaryschool

Please "LIKE" us on Facebook! We make positive and celebratory posts and comments.

Website: <https://zachsdschools.org/>

October 19th - October 23rd

Monday, October 19th:

- K-5 A Group @Zach
- K-5 B Group @ZOLA: 8:15am-2:30pm
- Lunch & Breakfast Sack Meals Provided: 11:00am-1:00pm @Kinard for K-5 B Group

Tuesday, October 20th:

- K-5 B Group @Zach
- K-5 A Group @ZOLA: 8:15am-2:30pm
- Lunch & Breakfast Sack Meals Provided: 11:00am-1:00pm @Kinard for K-5 A Group
- Parent Q & A: 5:00pm; Google Meets (link on Zach Calendar)

Wednesday, October 21st:

- K-5 A Group @Zach
- K-5 B Group @ZOLA: 8:15am-2:30pm
- Lunch & Breakfast Sack Meals Provided: 11:00am-1:00pm @Kinard for K-5 B Group
- Zach Fundraiser: 5-8pm; Modern Market Eatery

Thursday, October 22nd:

- K-5 B Group @Zach
- K-5 A Group @ZOLA: 8:15am-2:30pm
- Lunch & Breakfast Sack Meals Provided: 11:00am-1:00pm @Kinard for K-5 A Group

Friday, October 23rd:

- K-5 A & B Group @ ZOLA 8:15-8:30am
- Lunch & Breakfast Sack Meals Provided: 11:00am-1:00pm @Kinard

Lunch Menu

Monday, October 19th:

- Cheese Pizza
- Yogurt with Goldfish Crackers

Tuesday, October 20th:

- Cheese Calzone & Marinara
- Turkey & Cheese Sandwich

Wednesday, October 21st:

- Cheeseburger
- Yogurt Parfait

Thursday, October 22nd:

- Chicken Strips & Goldfish
- Turkey & Cheese Sandwich

Friday, October 23rd: At Kinard

- Chicken Patty Sandwich
- Chef Salad

*Please note students learning @Zach days eat lunch at Zach, but @ZOLA days can pick up lunch at Kinard.



Upcoming Events

Nov. 2 & 3: Lockdown & Evacuation Drill

Nov. 4 & 5: Picture Days

- PSDV Students 3:00-4:00pm

New Information

Immunization Records

In compliance with the state law, all children in Colorado schools must have a complete up-to-date immunization record on file in the school office. Exceptions to immunizations must be completed on an annual basis. Students without immunizations or exemptions cannot attend school. Exemption forms are attached to this email.

Medication

All prescription medication must be in the original bottle and accompanied by written permission from the physician and the parent/guardian. Over the counter medications such as cough drops, Tylenol, etc. whether long-term or short-term, require a permission slip signed by a physician and parent/guardian and must be in the container in which they were purchased. Forms are available in the school office as well as attached to this email. All medications must be kept in a locked cabinet in the school health office. Students may not keep medications in their lunchboxes, desks, coats, etc. and administer them to themselves. Exceptions to this rule apply with respect to asthma, food allergy and anaphylaxis health management, in accordance with state law and PSD policy.

Medication Drop-Off

Medications and the required signed documents for grades 3rd, 4th, and 5th, can be dropped off at the front of Zach Elementary on Monday, October 19th and Tuesday, October 20th. Drop Off will be available from 11:00am to 1:00pm.

Student Absence

Student absences will be reported on ParentVue, unless the student is experiencing COVID-19 symptoms, been exposed to COVID-19, and/or been tested for COVID-19. If that is the case, please call the attendance line to report your student's absence. Please submit your absence by 8am the day your child will be absent. To report an absence, log on to your ParentVue account <https://www.psdschools.org/ParentVUE> next to your student is a report absence button, click on that button, select the day(s) for which the student will be absent, enter a reason for the absence and fill in the note field. Click submit.

A note is required to excuse the absence. Absences submitted will be reviewed by the school Attendance Clerk. Absences submitted without a note are subject to being delayed, denied, or unexcused when reviewed by the Attendance Clerk. Please add to the note if your child will be absent all day or specify the times your child will be absent.

NOTE: Remote Learning should be used in situations where your student would be attending in person on their assigned A/B day but will be participating remotely.

(Example: Your student would normally be at school on Monday and Wednesday but is in quarantine; select 'Remote Learning' for Monday and Wednesday but not needed for Tuesday, Thursday since those are already remote days)

Students that are absent with no parent reporting it in ParentVue will be marked unexcused.

Return to Learn (Attachment)

Please see the attachment for the latest COVID-19 protocols for students.

Vote for Zach Teacher!

Please vote for our very own, Danielle Connors, for September's Teacher Tuesday through Townsquare Media! She could win a bundle of prizes including \$500 for her classroom! Mrs. Connors was nominated by one of our students and we want to support this nomination!

Please vote one time at each of these links by Monday, Oct. 19th at 10 am!

<https://newcountry991.com/teacher-tuesday-october-2020/>

<https://retro1025.com/teacher-tuesday-october-2020/>

<https://999thepoint.com/teacher-tuesday-october-2020/>

<https://943thex.com/teacher-tuesday-october-2020/>

<https://power1029noco.com/teacher-tuesday-october-2020/>

Reminders from Previous Family Memos

Back by Popular Demand....

Aisha will be hosting one more Q & A session for families.

It will be on Tuesday, October 20th at 5:00pm.

The session will be on Meets at:

meet.google.com/snv-mzbv-zft

K-5 Drop-Off and Pick-Up (ATTACHMENT)

Please see information on K-5 pick-up and drop-off.

Zach Fundraiser

Please try the new Modern Market Eatery, located at 3620 S. College, on Wednesday, October 21st 5-8pm. Fifteen percent of all sales will go to Zach. To-go orders are encouraged and please be mindful of social distancing protocols. Mention Zach when ordering!

ORIGINAL WORKS ANNOUNCEMENT!

Original Works is the #1 art-based program in the country, offering a very special program that allows you to have your child's very own artwork reproduced onto a number of professional, full color products. Zach has been participating in the program ever since we opened, and I know many of you have collections of your favorite items from over the years! Due to our learning situation this year, we won't be able to run the Original Works Program in the same set up that we usually do... but we have great news for you! We have set up a program with Original Works called "Online atHome" where students can create the artwork at home. You can then email Original Works a picture of the artwork and will be able to order items to be shipped directly to your homes or to whomever you would like to send your child's artwork to! Our ordering timeframe will be from October 26th to November 9th. Placing orders during this time frame will assure your order arrives in plenty of time for the holidays. More information on how to order will be coming home soon. In the meantime, you can start making the art! Please check out the following pages for more important information and requirements when creating your artwork, and to see different project ideas:

<https://sites.google.com/psdschools.org/zac-learning-specials/art/original-works>

If you have any questions, please contact Mrs. Angie Sickels at asickels@psdschools.org

Zach Spirit Gear

Time to purchase your Zach spirit gear! Order now and get your delivery in time for our upcoming school spirit days!

<https://www.rokkitwear.com/school/55724-zach-elementary-school>

ATTACHMENTS

Return to Learn

K-5 Drop-Off and Pick-Up

Map of Drop- Off and Pick-Up

Return to Learn: guidance following a positive COVID-19 Symptom Screen (R1)

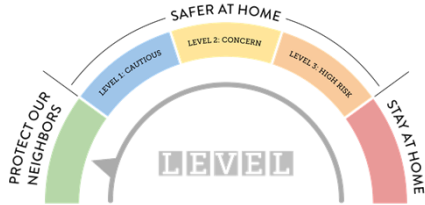


This decision tool is NOT intended for cases or close contacts of COVID-19.

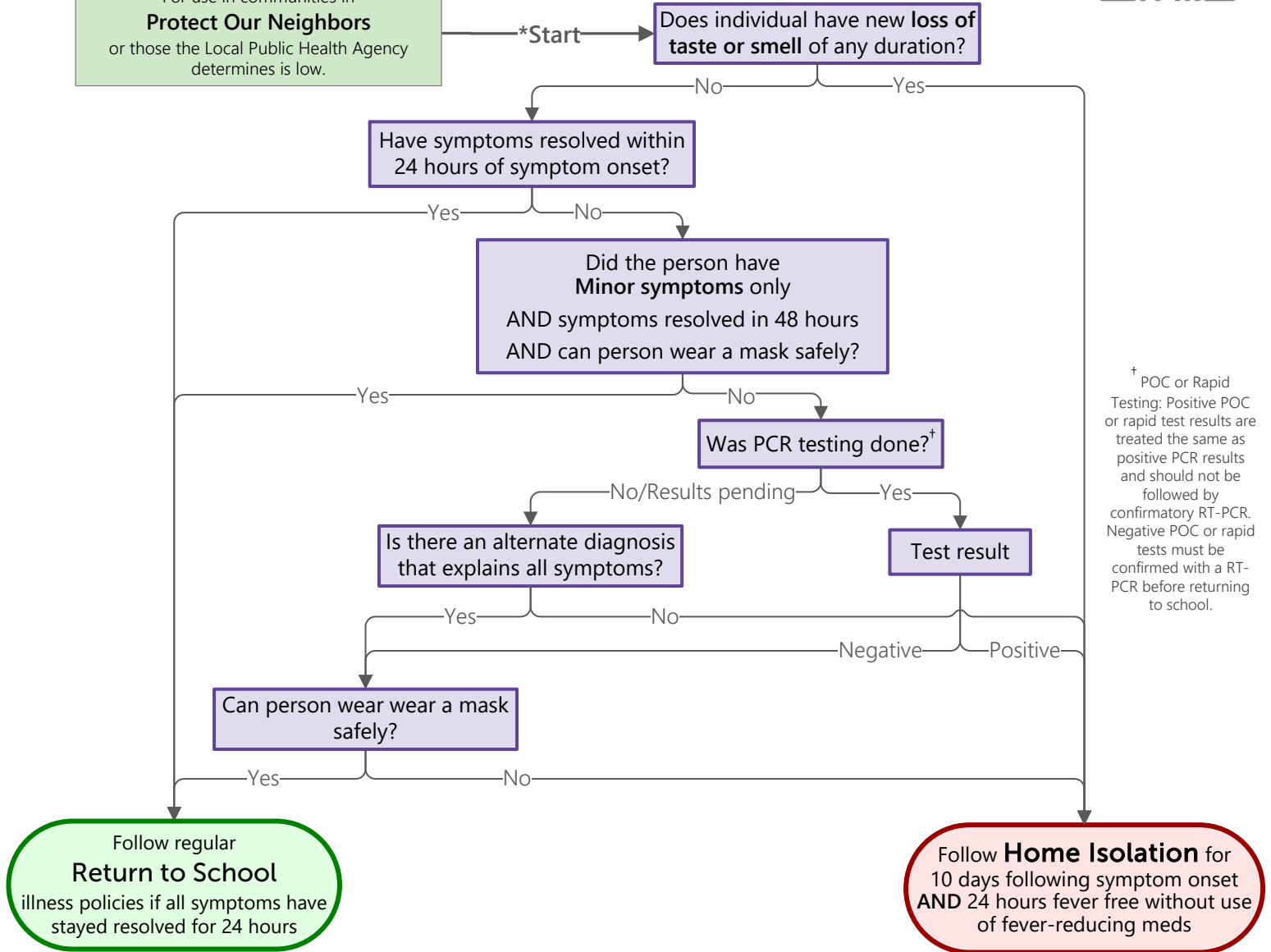
A confirmed COVID-19 case or close contact should follow public health isolation or quarantine instructions for return to school/work. *No test result can end an individual's isolation or quarantine period early.*

***All students/staff with symptoms of COVID-19 should be tested as soon as possible.**

To request assistance or provide feedback:
<https://tinyurl.com/COP12Feedback>



For use in communities in **Protect Our Neighbors** or those the Local Public Health Agency determines is low.



[†] POC or Rapid Testing: Positive POC or rapid test results are treated the same as positive PCR results and should not be followed by confirmatory RT-PCR. Negative POC or rapid tests must be confirmed with a RT-PCR before returning to school.

Critical Symptom

- Loss of taste or smell

Major Symptoms

- Feeling feverish, having chills, temperature of 100.4°F or greater
- New or worsening cough
- Shortness of breath or difficulty breathing

Minor Symptoms

- Sore throat
- Runny nose or congestion
- Muscle or body aches
- Headache
- Fatigue
- Nausea, vomiting
- Diarrhea

¹ In the setting of low community transmission, the following are examples of alternate diagnoses that should be considered, if the clinician believes that they explain the reported symptoms. However, if the patient has 2 or more major criteria, fever and any major criteria, known contact with a person with known or suspected COVID-19, or new loss of taste/smell, COVID-19 PCR should be pursued regardless of alternative diagnosis.

- Positive laboratory test: influenza, streptococcal pharyngitis ("strep throat"), bacterial infection
- Clinical diagnosis: worsening of known illness (such as asthma or seasonal allergies) with clear link to underlying disease

Return to Learn: guidance following a positive COVID-19 Symptom Screen (R2)

STOP

This decision tool is **NOT** intended for cases or close contacts of COVID-19.

A confirmed COVID-19 case or close contact should follow public health isolation or quarantine instructions for return to school/work. No test result can end an individual's *isolation or quarantine* period early.

*All students/staff with symptoms of COVID-19 should be tested as soon as possible.

To request assistance or provide feedback:
<https://tinyurl.com/COP12Feedback>



For use in communities in
Safer At Home: Level 1 or 2

*Start

Does individual have new **loss of taste or smell** of any duration?

No

Yes

Have symptoms resolved within 24 hours of symptom onset?

Yes

No

Did the person have **Minor symptoms only**
 AND symptoms resolved in 48 hours
 AND can person wear a mask safely?

Yes

No

Was PCR testing done?[†]

Yes

No/Pending

Test result

Negative

Positive

Can person wear a mask safely?

Yes

No

Follow regular
Return to School

illness policies if all symptoms have stayed resolved for 24 hours

Follow **Home Isolation** for 10 days following symptom onset AND 24 hours fever free without use of fever-reducing meds

[†] POC or Rapid Testing: Positive POC or rapid test results are treated the same as positive PCR results and should not be followed by confirmatory RT-PCR. Negative POC or rapid tests must be confirmed with a RT-PCR before returning to school.

Critical Symptom

- Loss of taste or smell

Major Symptoms

- Feeling feverish, having chills, temperature of 100.4°F or greater
- New or worsening cough
- Shortness of breath or difficulty breathing

Minor Symptoms

- Sore throat
- Runny nose or congestion
- Muscle or body aches
- Headache
- Fatigue
- Nausea, vomiting
- Diarrhea

Return to Learn: guidance following a positive COVID-19 Symptom Screen (R3)



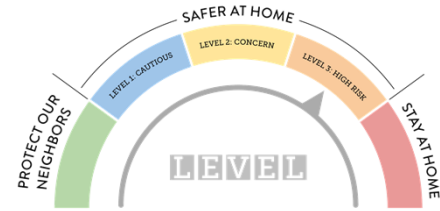
This decision tool is **NOT** intended for cases or close contacts of COVID-19.

A confirmed COVID-19 case or close contact should follow public health isolation or quarantine instructions for return to school/work. *No test result can end an individual's isolation or quarantine period early.*

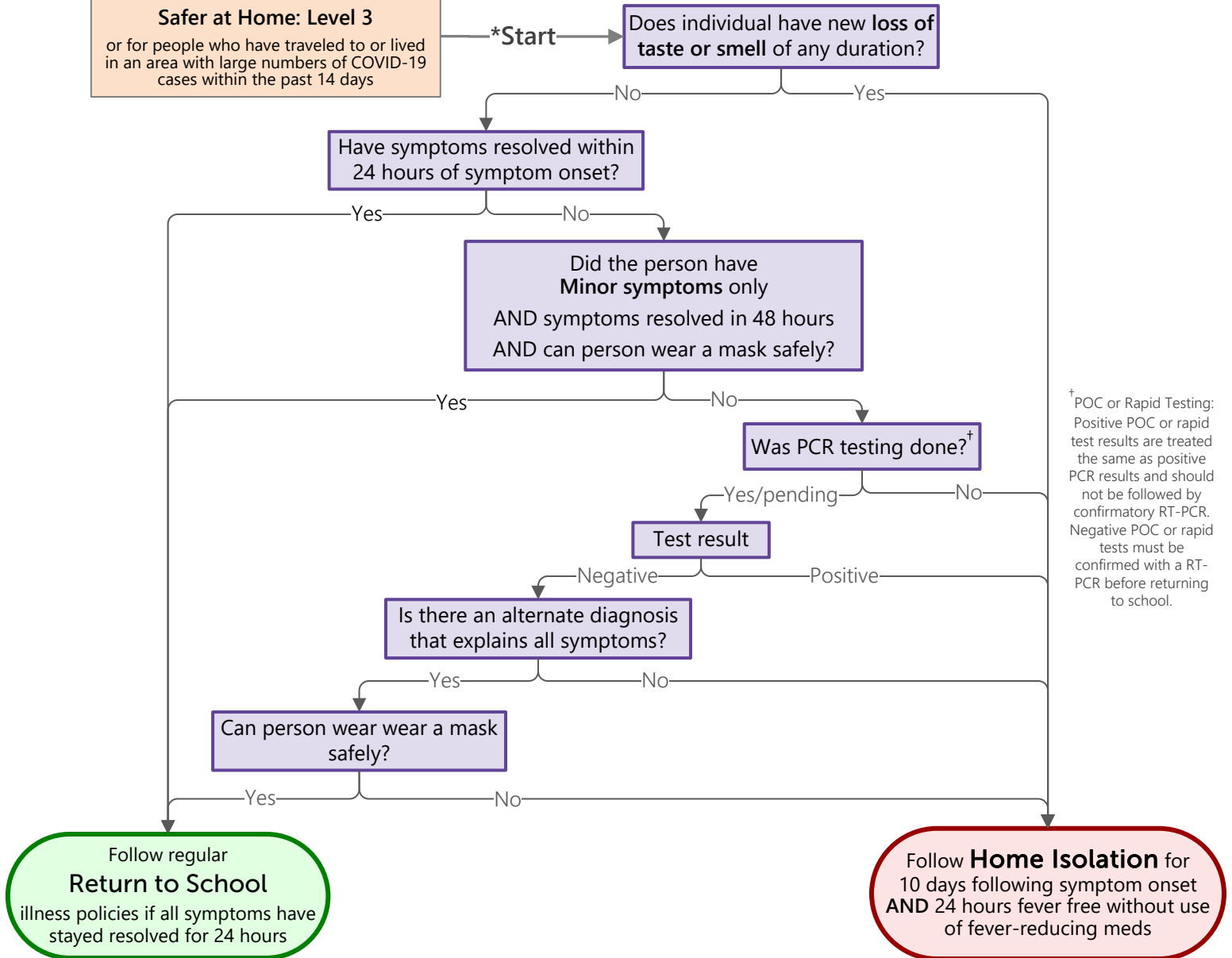
***All students/staff with symptoms of COVID-19 should be tested as soon as possible.**

To request assistance or provide feedback:

<https://tinyurl.com/COP12Feedback>



For use in communities in
Safer at Home: Level 3
or for people who have traveled to or lived
in an area with large numbers of COVID-19
cases within the past 14 days



Critical Symptom

- Loss of taste or smell

Major Symptoms

- Feeling feverish, having chills, temperature of 100.4°F or greater
- New or worsening cough
- Shortness of breath or difficulty breathing

Minor Symptoms

- Sore throat
- Runny nose or congestion
- Muscle or body aches
- Headache
- Fatigue
- Nausea, vomiting
- Diarrhea

¹ In the setting of medium or high transmission, the following are examples of alternate diagnoses that should be considered if the COVID-19 PCR is negative.

- Positive laboratory test: influenza, streptococcal pharyngitis ("strep throat"), bacterial infection
- Clinical diagnoses: worsening of known illness (such as asthma or seasonal allergies) with clear link to underlying disease

K-5 Morning Drop-off

Safety:

- All adults, students, and staff members are to wear a cloth mask while on the Zach campus and are expected to maintain physical distancing protocol.
- Zach staff will be wearing a bright orange or neon yellow vest.
- No cell phone usage while in vehicles.

Breakfast:

Breakfast will be served outside, at the current lunch location, from 7:45-8:10 AM. Students will eat their breakfast in the designated area during this time.

K-5 Morning drop-off:

- School starts at 8:15 AM.
- See attached map for specific location.
- Staff are on duty at Kiss and Go and the entry door locations from 7:55-8:15 AM.
- If you arrive after 8:15 AM, your child must enter through the main entrance.

Kindergarten Drop-off:

- Students will enter the playground area via the main playground gate beginning at 7:55 AM. Parents may walk their child to the gate where you will be met by Kindergarten staff. Only students and staff are allowed into the gated area.
- If you drive to school, please park in the south parking lot and cross at the designated crosswalk area. There will be a staff member on duty at the crosswalk.
- Students on bikes and scooters will park their equipment on the bike racks and then head immediately to their classroom entry location.

1st Grade Drop-off:

- If you drive to school, use the Kiss and Go lane where your child will exit the vehicle after the crosswalk. Staff will be on duty from 7:55-8:15 AM.
- Students will line up near the main entrance location at the designated color and sign for their classroom.
- Students on bikes and scooters will park their equipment on the bike racks prior to heading to their entry location.

2nd Grade Drop-off:

- If you drive to school, use the Kiss and Go lane where your child will exit the vehicle after the crosswalk. Staff will be on duty from 7:55-8:15 AM.
- Students will line up at the west entrance location at the designated color and sign for their classroom.
- Students on bikes and scooters will park their equipment on the bike racks prior to heading to their entry location.

3rd Grade Drop-off:

- If you drive to school, use the Kiss and Go lane where your child will exit the vehicle after the crosswalk. Staff will be on duty from 7:55-8:15 AM.
- Students will line up at the northeast entrance location at the designated color and sign for their classroom.
- Students on bikes and scooters will park their equipment on the bike racks prior to heading to their entry location.

4th Grade Drop-off:

- If you drive to school, use the Kiss and Go lane where your child will exit the vehicle after the crosswalk. Staff will be on duty from 7:55-8:15 AM.
- Students will enter the playground area via the main playground gate beginning at 7:55 AM and proceed to the media center hallway doors for entry.
- Students on bikes and scooters will park their equipment on the bike racks prior to heading to their entry location.

5th Grade Drop-off:

- If you drive to school, use the Kiss and Go lane where your child will exit the vehicle after the crosswalk. Staff will be on duty from 7:55-8:15 AM.
- Students will enter the playground area via the main playground gate beginning at 7:55 AM and proceed to the east doors for entry.
- Students on bikes and scooters will park their equipment on the bike racks prior to heading to their entry location.

K-5 Afternoon Pick-up

Safety:

- All adults, students, and staff members are to wear a cloth mask while on the Zach campus and are expected to maintain physical distancing protocol.
- Zach staff will be wearing a bright orange or neon yellow vest.
- No cell phone usage while in vehicles

K-5 Afternoon Pick-up:

- See below for dismissal times for grades 1-5, Kindergarten dismisses at 2:40 PM
- See attached map for specific location.
- Staff are on duty at Kiss and Go from 2:45-3:15 PM.
- Families should develop a “meeting place” or “sibling pickup” area where parents, guardians, and/or older siblings can connect with younger siblings after school. Use one of the assigned locations for grade levels as those areas are away from entry and exit doors.
- Parents may park along Muskrat Creek or Kechter Road while keeping clear of designated crosswalks and 100 feet from stop signs.

Kindergarten Pick-up:

- Students will be supervised by Kindergarten staff inside the main playground gate area (where they entered in the AM) beginning at the 2:40 PM dismissal time. Parents are to wait outside the gated area and staff will release your child to you upon your arrival. Only students and staff are allowed into the gated area.
- If you drive to school, please park in the south parking lot and cross at the designated crosswalk area.
- Students on bikes and scooters will pick up their equipment on the bike racks and then immediately exit through the main playground gate (where they entered in the AM).

1st Grade Pick-up:

- Students will depart via the main entrance location. Note dismissal times: Uhrich 2:47 PM, Stansberry 2:49 PM, Sinclair 2:51 PM.
- If you drive to school, please wait in the Kiss and Go lane and your child will come to your car.
- If you walk to school, wait for your child in the grass “waiting area” between the main entrance and the flag pole. Keep clear of the main entrance area.
- Students on bikes and scooters will pick up their equipment on the bike racks and then immediately exit through the main playground gate.

2nd Grade Pick-up:

- Students will depart via the west exit door location. Note dismissal times: Waido 2:45 PM, Lee 2:47 PM, Horky 2:49 PM, Brazelton 2:51 PM.
- If you drive to school, please wait in the Kiss and Go lane and your child will come to your car.
- If you walk to school, wait in the grass “waiting area” on the north side of Dr. Waido’s classroom for your child. Keep clear of the west entrance area.
- Students on bikes and scooters will pick up their equipment on the bike racks and then immediately exit through the main playground gate.

3rd Grade Pick-up:

- Students will depart via the northeast building doors. Note dismissal times: Moore 2:43 PM, Koch 2:45 PM, Tholl 2:47 PM, Ratliff 2:49 PM.
- If you drive to school, please wait in the Kiss and Go lane and your child will come to your car.
- If you walk to school, wait in the grass “waiting area” on the north side of the building, near the northeast doors, for your child. Keep clear of the northeast entrance area.
- Students on bikes and scooters will pick up their equipment on the bike racks and then immediately exit through the main playground gate.

4th Grade Pick-up:

- Students will depart via the main playground gate location. Note dismissal times: Stafford 2:41 PM, Walter 2:43 PM, Boisen 2:45 PM, Camping 2:47 PM.
- If you drive to school, please wait in the Kiss and Go lane and your child will come to your car.
- If you walk to school, wait near the flagpole for your child.

- Students on bikes and scooters will pick up their equipment on the bike racks and then immediately exit through the main playground gate (where they entered in the AM).

5th Grade Pick-up:

- Students will depart via the main playground gate location. Note dismissal times: Kozusko and Eberle 2:41 PM, Schilling 2:43 PM, Oster 2:45 PM.
- If you drive to school, please wait in the Kiss and Go lane and your child will come to your car.
- If you walk to school, wait near the flagpole for your child.
- Students on bikes and scooters will pick up their equipment on the bike racks and then immediately exit through the main playground gate (where they entered in the AM).

